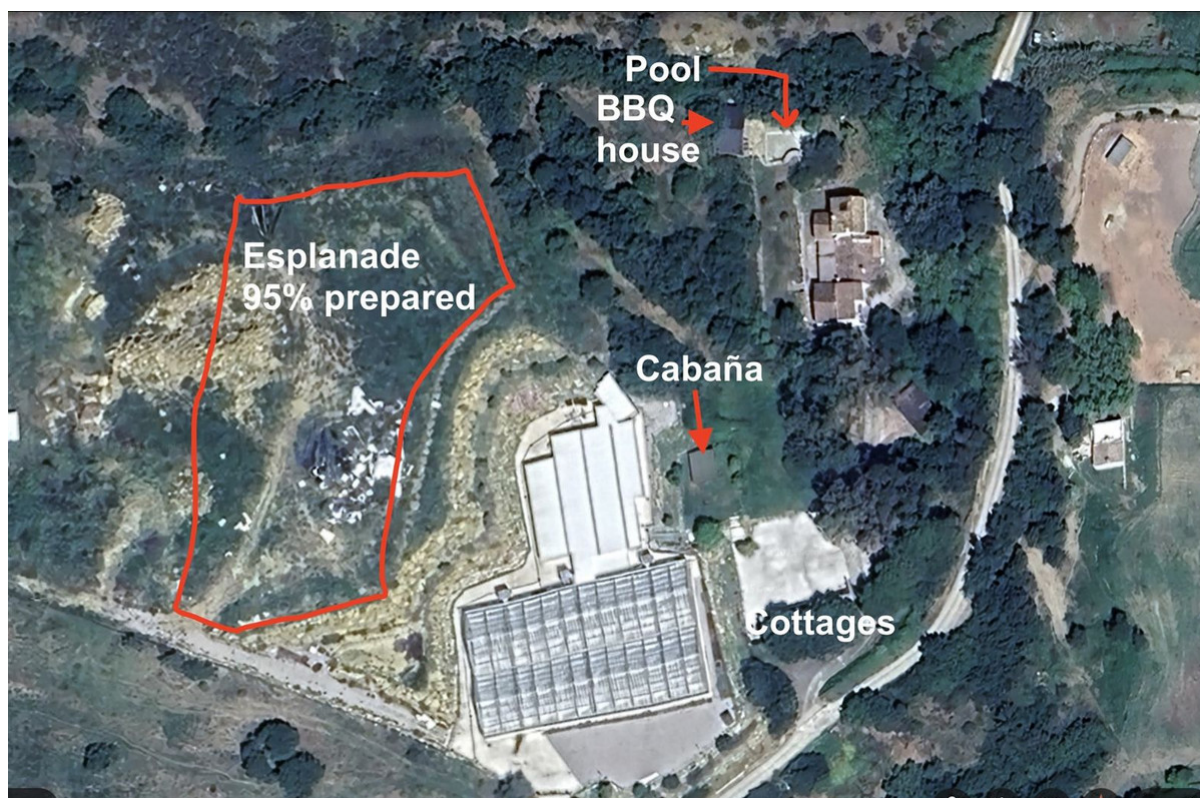


Commercial premise

Casares



Rooms: 6

Bathrooms: 5

M²: 2,000

Price: 4,250,000 €

Status: Sale

Property Type: Commercial
premise

Reference: R5073775

Publish date: 14.10.25

Overview: A Unique, Multi-Faceted Estate - Diverse development potential, sitting on a plot of 45,000m². Tucked between gentle hills and a river, this discreet rural estate offers a rare combination of infrastructure, privacy, and development potential. Currently home to purpose-built, EU-level compliant GMP cultivation facilities, the property also lends itself effortlessly to high-value niche agriculture such as micro-greens or functional fungi. The estate comprises: • 1250m² of greenhouse grow area plus 550m² of labs and white rooms • A private, fully equipped equestrian centre • Two modern, self-contained one-bedroom guest cottages • A spacious four-bedroom main residence (two en-suite) • Landscaped leisure area with pool, large BBQ pergola, and panoramic views • Approx. 6,000m² of prime, flattened land ready for additional projects — from a motorhome park to further agriculture or eco-tourism development • Nearly 30,000m² of elevated pastureland, ideal for sustainable energy installation (solar or wind potential) • Natural river border and minimal neighbouring activity (two weekend-only residents) • Just 5km from the motorway and regional network This is a site ideal for an entrepreneur with the means and motivation to realise the next chapter in sustainable, rural living — whether wellness, agricultural, equestrian, or eco-tourism focused.

Features:

Pool, None, None, None, Parking, None, None